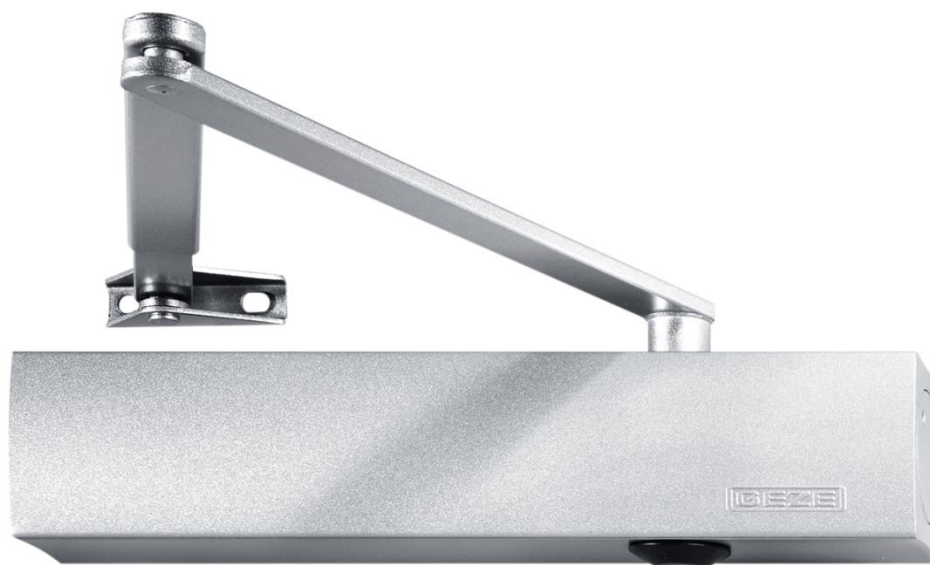


HARDWARE PERFORMANCE SHEET

GEZE TS 4000



Hardware Performance Sheet (HPS)

according to DIN EN 16035:2013-03 "Identification and summary of test evidence to facilitate the interchangeability of building hardware for application to fire resisting and/or smoke control doorsets and/or openable windows."



Product reference:	GEZE TS 4000 (TS 4000 EN 1-6, TS 4000 EN 5-7, TS 4000 S)					
Manufacturer:	GEZE GmbH, Leonberg, Germany					
Type of building hardware:	Door closer with controlled closing procedure for use on fire and/or smoke protection doors or on emergency exits					
Relevant standard:	EN 1154:1996/A1:2002/AC:2006					
Coding system and classification EN 1154:	1	2	3	4	5	6
	4	8	1-6 / 5-7	1	1	4
Product main dimensions:	287 x 60 x 47					

Remarks:

Test report	Year	Steel doorset EN 15269-2	Timber doorset EN 15269-3	Steel framed doorset EN 15269-5	Alu framed doorset EN 15269-5	Single leaf doorset	Double leaf doorset	EN 1634-1	EN 1634-2	EN 1634-3	EN 1191	Mounting of hardware ¹	Fire side ²	Duration of fire testing [min]
903 1663 000/Bg	2016	x					x	x				C	C	92
DMT-DO-50-791	2020	x					x	x				O	O	101
DMT-DO-50-793	2020	x				x		x				O	O	93
20-001953-PR01	2020	x					x	x				O	C	113
20-001957-PR01	2020	x					x				x	O	-	-

¹ C = closing side; O = opening side; M = mortice

² C = closing side; O = opening side

Test report number:	903 1663 000/Bg	
Test report issue date:	01.07.2016	
Test method:	EN 1634-1:2014	
Test report issued by / certification body:	MPA Universität Stuttgart, Postfach 801140, 70511 Stuttgart, Germany	
Material of doorset	Steel door leaf	
Material of door frame:	Steel frame	
Setup of door set:	Hinged, double leaf fire resistant and smoke control door set	
Door thickness:	63 mm	
Dimension of primary leaf:	1030 x 2120 mm	
Mass of primary leaf:	108 kg	
Dimension of secondary leaf:	970 x 2120 mm	
Mass of secondary leaf:	107 kg	
Test setup:	Fire exposure on opposite hinge side (closing side)	
Hardware product variant:	TS 4000 on passive leaf	
Mounting position of hardware product:	Transom mounting position on opposite hinge side (closing side)	
Classification according to test method:	Fire integrity E	92 min
	Fire insulation I ₁	-
	Fire insulation I ₂	74 min
	Heat radiation W	-
	Duration of testing	92 min

Test report number:	DMT-DO-50-791	
Test report issue date:	09.06.2020	
Test method:	EN 1634-1:2014-03	
Test report issued by / certification body:	DMT GmbH & Co. KG, Tremoniastraße 13, 44137 Dortmund, Germany	
Material of doorset	Steel door leaf	
Material of door frame:	Steel frame	
Setup of door set:	Hinged, double leaf fire resistant and smoke control door set	
Door thickness:	65 mm	
Dimension of primary leaf:	1228 x 2475	
Mass of primary leaf:	182 kg	
Dimension of secondary leaf:	1228 x 2475	
Mass of secondary leaf:	192 kg	
Test setup:	Fire exposure on hinge side (opening side)	
Hardware product variant:	TS 4000 EN 7	
Mounting position of hardware product:	Standard mounting position on hinge side (opening side)	
Classification according to test method:	Fire integrity E	101 min
	Fire insulation I ₁	28 min
	Fire insulation I ₂	95 min
	Heat radiation W	101 min
	Duration of testing	101 min

Test report number:	DMT-DO-50-793	
Test report issue date:	09.06.2020	
Test method:	EN 1634-1:2014+A1:2018	
Test report issued by / certification body:	DMT GmbH & Co. KG, Tremoniastraße 13, 44137 Dortmund, Germany	
Material of doorset	Steel door leaf	
Material of door frame:	Steel frame	
Setup of door set:	Hinged, single leaf fire resistant and smoke control door	
Door thickness:	64 mm	
Dimension of primary leaf:	1264 x 2249 mm	
Mass of primary leaf:	193,4 kg	
Dimension of secondary leaf:	-	
Mass of secondary leaf:	-	
Test setup:	Fire exposure on hinge side (opening side)	
Hardware product variant:	TS 4000	
Mounting position of hardware product:	Standard mounting position on hinge side (opening side)	
Classification according to test method:	Fire integrity E	93 min
	Fire insulation I ₁	29 min
	Fire insulation I ₂	93 min
	Heat radiation W	93 min
	Duration of testing	93 min

Test report number:	20-001953-PR01	
Test report issue date:	16.06.2020	
Test method:	EN 1634-1:2014+A1:2018	
Test report issued by / certification body:	ift Rosenheim GmbH, Theodor-Gietl-Straße 7-9, 83026 Rosenheim, Germany	
Material of doorset	Steel door leaf	
Material of door frame:	Steel frame	
Setup of door set:	Hinged, double leaf fire resistant and smoke control door set	
Door thickness:	65 mm	
Dimension of primary leaf:	1262 x 2487 mm	
Mass of primary leaf:	135,5 kg	
Dimension of secondary leaf:	1274 x 2487 mm	
Mass of secondary leaf:	147 kg	
Test setup:	Fire exposure on hinge side (opening side)	
Hardware product variant:	TS 4000	
Mounting position of hardware product:	Transom mounting position on opposite hinge side (closing side)	
Classification according to test method:	Fire integrity E	112 min
	Fire insulation I ₁	26 min
	Fire insulation I ₂	112 min
	Heat radiation W	-
	Duration of testing	113 min

Test report number:	20-001957-PR01
Test report issue date:	30.06.2020
Test method:	EN 1191:2013-04
Test report issued by / certification body:	ift Rosenheim GmbH, Theodor-Gietl-Straße 7-9, 83026 Rosenheim, Germany
Material of doorset	Steel door leaf
Material of door frame:	Steel frame
Setup of door set:	Hinged, double leaf fire resistant and smoke control door set
Door thickness:	-
Dimension of primary leaf:	1512 x 2487 mm
Mass of primary leaf:	185 kg
Dimension of secondary leaf:	1514 x 2487 mm
Mass of secondary leaf:	186 kg
Test setup:	Durability of self-closing
Hardware product variant:	TS 4000
Mounting position of hardware product:	Standard mounting position on hinge side (opening side)
Classification according to test method:	Primary leaf – C5 – (200.000 cycles) Secondary leaf – C4 – (100.000 cycles)

We are GEZE.

For liveable buildings

GEZE stands for innovation, high quality and comprehensive support of building technologies. From the initial idea, planning and operational implementation with standard products to customised system solutions and individual service and maintenance plans. We offer an extensive product range of door, window and safety technology products and are a major driving force behind the digital networking of building automation.

Legal information

This GEZE Hardware Performance Sheet (HPS) may only be used by the recipient for the purpose of providing it to testing laboratories for the approval of their own fire protection systems. It is not intended for marketing or distribution purposes by third parties and may not be used for this reason.

The recipient is responsible at all times for using the latest and complete version of the required HPS, as only this version is valid. The information provided may also change as a result of changes due to more recent tests.

The use of any extracts of this document is not permitted. GEZE must always be recognisable as the author.

Subject to change without notice.

GEZE GmbH

Reinhold-Vöster-Strasse 21 – 29
71229 Leonberg
Germany
www.geze.com

Telephone: +49 7152 203 0
Fax: +49 7152 203 310
Email: info.de@geze.com