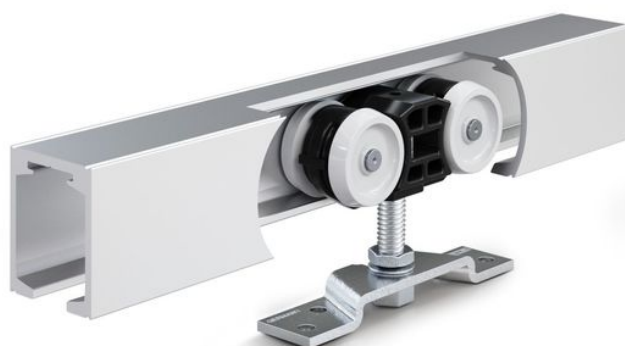


# Product data sheet

## Perlan 140 KS wood



Corrosion-resistant sliding door fitting system for wood, plastic, or metal elements with a leaf weight of 140 kg

### AREAS OF APPLICATION

- Corrosion-resistant fitting for exterior use
- Sliding shutters and shading systems
- Installation of fittings possible in combination with overhanging weather hood
- Single and multi-leaf sliding panel
- Mounting to the wall and also to the ceiling via additional ceiling brackets

### PRODUCT FEATURES

- Extremely reliable corrosion protection for leaf weights up to 140 kg
- Tested in accordance with EN 1670 Class 4 for external use or in extreme climatic conditions, such as swimming baths
- For leaves made of wood, plastic, or metal
- Precision ball bearings in the roller carriages offer very smooth sliding action

### TECHNICAL DATA

Productname	Perlan 140 KS wood
-------------	--------------------

### PART

#### TRACK PERLAN 140

Track for sliding door fitting



Designation	Description	Ident-No.	Colour
Track Perlan 140	with countersunk drill holes (prepared for Perlan SoftStop)	142518	EV1
Track Perlan 140	with countersunk drill holes (prepared for Perlan SoftStop)	128660	EV1
Track Perlan 140	with countersunk drill holes (prepared for Perlan SoftStop)	128662	Stainless steel optic
Track Perlan 140	with countersunk drill holes (prepared for Perlan SoftStop)	135061	Stainless steel optic
Track Perlan 140	with countersunk drill holes (prepared for Perlan SoftStop)	135048	EV1
Track Perlan 140	with countersunk drill holes (prepared for Perlan SoftStop)	135050	Stainless steel optic
Track Perlan 140	with countersunk drill holes (prepared for Perlan SoftStop)	135049	Stainless steel optic
Track Perlan 140	with countersunk drill holes (prepared for Perlan SoftStop)	135047	EV1
Track Perlan 140	with countersunk drill holes (prepared for Perlan SoftStop)	142519	EV1
Track Perlan 140	with countersunk drill holes (prepared for Perlan SoftStop)	135046	EV1



## ACCESSORIES

### HOLD-OPEN SPRING

Hold-open spring for Perlan 140 end stop



Designation	Ident-No.
Hold-open spring	064242

### DOOR STOP

End stop for sliding leaves



Designation	Ident-No.
Door stop	000339
Door stop	000342

### CLAMPING INSERT, GLASS CLAMPING PLATE 30 MM \*

Clamping shim for glass thicknesses of 12.76 mm (1/2 inch)



Designation	Description	Ident-No.
Clamping insert, glass clamping plate 30 mm	for 2 glass clamping plates, for use with 12.7 mm (1/2 inch) toughened safety glass	142634

## HEIGHT COMPENSATION MECHANISM / CEILING DISTANCE SET, WITH VARIABLE ADJUSTMENT

Height compensation with variable adjustment for ceiling installation of tracks



Designation	Description	Ident-No.
Height compensation mechanism / ceiling distance set, with variable adjustment	6 pieces, height compensation mechanism with variable adjustment from 13 mm to 18 mm. For use for ceiling mounting using clip-on cover 100/145 as well as for general use on uneven ceilings	138099

## ALL-GLASS SYSTEM STAINLESS STEEL SINGLE POINT FIXING SET

Stainless steel single point fixing for toughened safety glass panes



Designation	Description	Ident-No.	Colour	Glass thickness
All-glass system stainless steel single point fixing set	2 pieces, brushed, for wooden leaves and glass leaves 8-12 mm, including 4 Rampa sleeves (wood) and installation material for glass	127961	Stainless steel	8 - 12 mm

## DOOR PULL HANDLE, CONFIGURED \*

Push bar – round design for installation on glass leaves



Designation	Ident-No.	Colour
Door pull handle, configured *	127616	Stainless steel



---

\* The products designated above may vary in form, type, characteristics, function, or availability depending on the country. Please get in touch with your GEZE contact person if you have any questions.