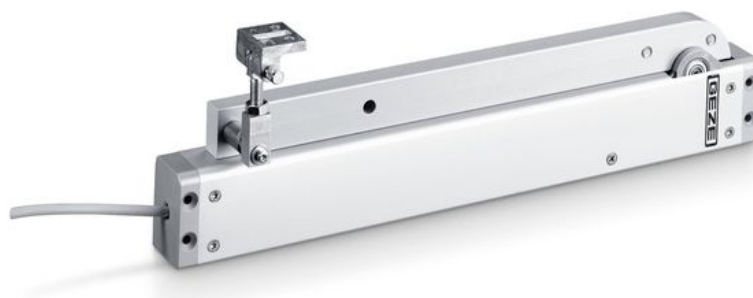


Product data sheet

RWA K 600 F



Retractable arm drive for installation on windows

AREAS OF APPLICATION

- Smoke and heat extraction and natural ventilation (24 V)
- Inward opening windows with bottom-, top- and side-hung leaves
- Installation on wooden, PVC or metal windows
- Frame installation



PRODUCT FEATURES

- 90° window opening in less than 60 seconds
- Powerful drive with high torque
- Connector cable easy to replace by means of plug
- Integrated status contact for feedback signals
- Integrated synchronous module that can operate a max. of two drives without external control unit
- Tested as a natural smoke and heat exhaust ventilation device (SHEV) in accordance with EN 12101-2

TECHNICAL DATA

Productname	RWA K 600 F
Dimensions	421 x 40 x 86 mm
Housing material	Aluminum
Compressive force	600 N
Tensile force	600 N
Voltage at operation	24 V ± 25 %
Operating voltage	24 V DC
Current consumption	1.4 A
Residual ripple	20 %
Duty rating	30 %
Connector cable length	5 m
Special length of connector cable	10 m
Min. core cross section	0.5 mm ²
Number of cores	5 cores
Service temperature	-5 - 75 °C
IP rating	IP32
protection rating	III
Synchronising function	Yes
Additional locking available	Yes
Type of additional locking mechanism	Locking drive
Type of stroke shortening	Synchronising unit
End position cut-off extended	Internal path sensor
End position cut-off retracted	Internal path sensor
Overload cut-off	Yes
SHEV tested	Yes
Number synchronisation drive units	2
KNX ability	No
Bottom-hung window INWARD-opening frame installation	Yes
Side-hung window INWARD-opening frame installation	Yes
Top-hung window INWARD-opening frame installation	Yes

VARIANTS / ORDER INFO

Designation	Description	Ident-No.	Colour	Dimensions	Operating voltage
RWA K 600 F		130151	EV1	421 x 40 x 86 mm	24 V DC
RWA K 600 F - special design	Can be configured: Version master/slave, status contact, colour, opening angle, free programming	130152	according to RAL	421 x 40 x 86 mm	24 V DC
RWA K 600 F 2-leaf with closing sequence - special version	Can be configured: Fixed/active leaf, start-up delay, status contact, colour, free programming	137452	according to RAL	421 x 40 x 86 mm	24 V DC
RWA K 600 F 2-leaf with closing sequence *		137451	EV1	421 x 40 x 86 mm	24 V DC

ACCESSORIES**BRACKET R FOR RWA K 600 ***

Mounting bracket for K 600 retractable arm drive



* The products designated above may vary in form, type, characteristics, function, or availability depending on the country. Please get in touch with your GEZE contact person if you have any questions.