



SIMPLY SIMPLE

The new GEZE window drives



BEWEGUNG MIT SYSTEM

SIMPLY FLEXIBLE

GEZE has revised its portfolio for automatic window solutions, making it even easier to choose the right RWA drive. The all-round talent Slimchain, the powerful Powerchain and the E 920-E 990 drive which is flush-mounted on the frame profile dominate the new chain drive range. The compact spindle drive E 250 NT also opens up new possibilities. Various stroke variants allow the drives to be adapted flexibly to any window. Together with the corresponding locking drives, they become a system solution from a single source.



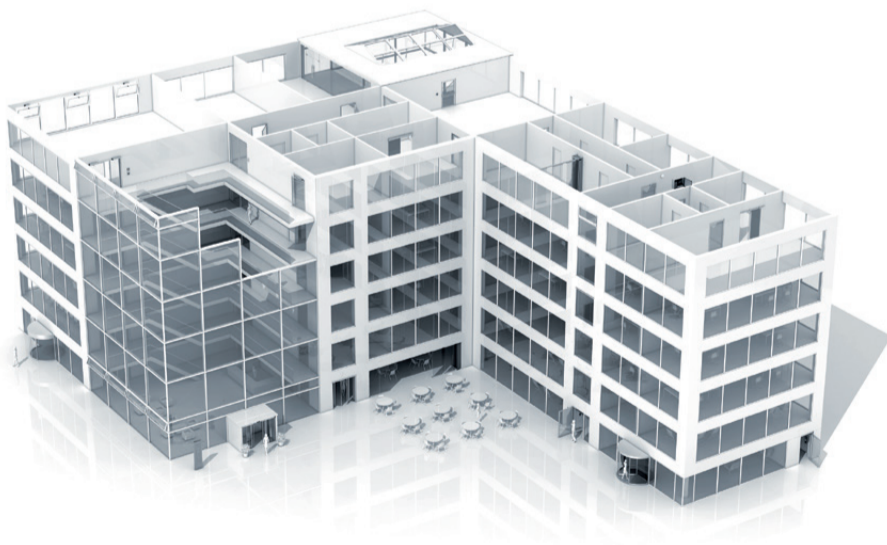
universal design award 2014

SIMPLY DISCREET

Sometimes, less is more: architects rely on inconspicuous low-key design. The new drives have a discreet and universal look. Their colour can be matched to the façade, allowing them to blend in discreetly. The Slimchain is the „slimmest“ and most compact of the new GEZE chain drives. Purist window design can be achieved using the E 920-E 990 chain drive. The drive and fitting technology is integrated in the window and invisible from the outside.

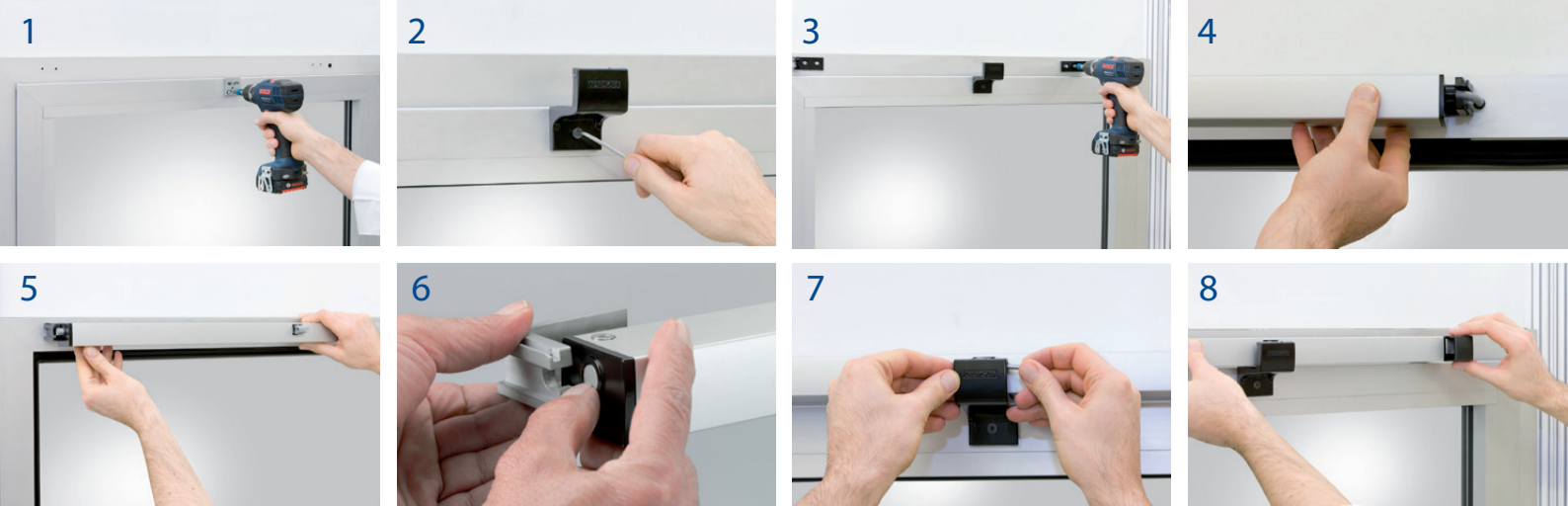
SIMPLY INTELLIGENT

The new drives are „intelligent“. State-of-the-art integrated control technology allows flexible settings with variable adjustment e.g. of the ventilation and alarm stroke and of the ventilation speed. This means drives can easily be adapted to different window sizes and opening requirements. Their flexibility enlarges the range of uses and makes building-specific solutions possible. Solo or Syncro: An integrated Syncro module guarantees the real synchronic control of up to three window and up to two locking drive options.



SIMPLY SAFE

The integrated control technology allows drives to be networked easily, for example when additional locking points are required for larger windows. The sturdy locking drive Power lock turns the Slimchain, Powerchain and E 250 NT into a system solution from a single source. The integrated chain drive E 920-E 990 is combined with the locking drive E 905/E 906. The intelligent control guarantees the sequential and safe opening and closing of the windows.



SIMPLY INSTALLED

With the innovative GEZE Smart fix installation system the Slimchain and Powerchain can be installed quickly and conveniently. The drives are simply „clipped“ to the consoles. Constructional adaptation work is no problem since the power supply cable can simply be removed. The flat ribbon cable on the integrated E 920-E 990 drive guarantees effortless and fast installation in the casement. The spindle drive E 250 NT is particularly easy to install thanks to the tried-and-trusted consoles.



SIMPLY NETWORKED

The trend towards building automation is continuing in the field of window technology. The new drives allow windows to be networked via bus systems. Object-specific, intelligent ventilation concepts can thus be implemented quickly and effortlessly. Interfaces to building management systems and standard bus systems permit the windows to be integrated into building automation.

SIMPLY VENTILATE

GEZE also offers automatic ventilation „with design“ for simpler applications, e.g. for private homes. Here, accessibility and convenience are playing a more and more important role. The ventilation drive ECchain is the powerful entry-level model that can also be used on small fanlights. The integrated stroke adjustment of this drive chain allows it to be adapted to different ventilation requirements.



SIMPLY GOOD

Whatever the requirements of your project – GEZE will provide expert support and advice throughout the life cycle of your application. We work out the optimum solution with and for you in a complete planning process. Innovative service tools help us: the calculation programme WinCalc carries out the complex calculations required for your window design. WinCalc will help you find the best drive solution for your windows quickly and easily.

The latest GEZE window drives
SIMPLY DISCREET
SIMPLY INTELLIGENT
SIMPLY SAFE
SIMPLY GEZE